



LIGHTING FOR WORLD'S ENTERTAINMENT

— 3D —
**VERTICAL
TUBE**
— SERIES —





3D VERTICAL TUBE

S E R I E S



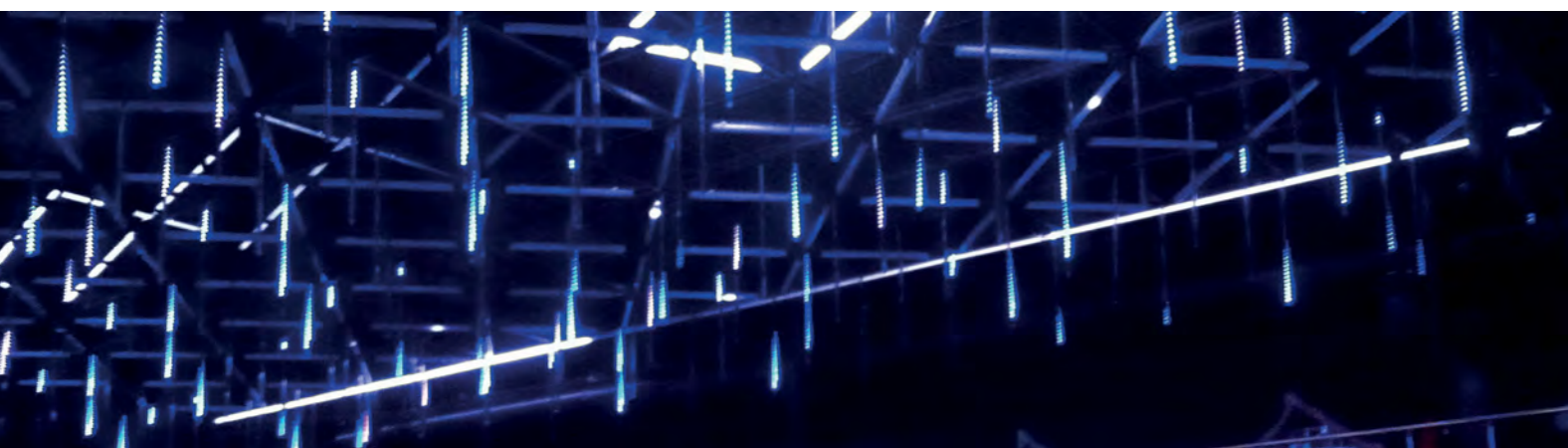
In the Right Light, Everything is Extraordinary

3D Vertical Tube fixtures offer a sleek, sophisticated feeling to night clubs, atriums, shopping centers and high-ceiling hotel lobbies. They are also one of ideal product lines for sound and light system rental companies.

They can be seen from a wide angle (130 degreesx2) and have a lightweight body, easing installation. 2D objects are converted into 3D objects by Vertical Tubes' pixel mapping effects and advanced programming technology. Vertical tubes provide dynamic lighting solutions with its unlimited pixel options and advanced accessories.

Vertical tubes are fully DMX and RDM compatible and available in RGB, RGBW and DW (Dynamic White) options with customised lengths.

Entertainment lighting sources have varied through the ages, but the main purposes of illuminating the stage and creating effects has remained the same. Hera LED desires to set the future with new methods and Vertical Tubes is an exciting product range in entertainment lighting.



High Performance by Certified Quality

Product complies with EU Safety regulations of EN 60598-1, EN 60598-2-3, EN 62471, EN 60950-1, EN 60950-22, EN 60529, EN 62262.

Product complies with EU EMC standards of EN 55024, EN 55032, EN 61000-4-3, EN 61000-4-4, EN 61000-4-6, EN 61000-4-8.

Product complies with US Safety standards of UL 1598, UL 60950-1, UL 60950-22 and US EMC standard of FCC Part 15 Class A.

We fully trust in our products and give 5-year warranty for all our product lines, subject to conditions given in the warranty agreement.

Gain From Our Perspective

With its history and experience of designing high profile lighting products, Hera Led Vertical Tube (VT) products offer a range specifically for entertainment and architectural lighting applications and permanent installations. Full IP rating and special housings for the permanent installations is our standard so is extensive colour mixing and control.

Our high reliability keeps operational costs very low and provides a user friendly lifetime along with a much aesthetic experience. VT series, like our other fixtures, utilize only the best and most current components within and provides end users with best of quality.

As entertainment productions become increasingly sophisticated, Hera LED is developing hi-tech products for more inspired illumination in the Entertainment Lighting. Vertical Tube is an impressive example of it. By ensuring strict adherence to optical and electrical specifications, VTs preconfigured using Madrix Platform, are ideal for large entertainment venues and VT fixture installations that demand absolute precision.

We are your partner ready to address your boldest lighting challenges, in entertainment or architecture.

Reliability in Numbers

Vertical tube fixtures are IP65 and IP07 protection class and with their durable structure, designed to meet indoor applications. They are resistant to impact and vibration with their polycarbonate housing.

End cap material and installation brackets are die-cast polycarbonate. All hardware is stainless steel and gaskets are silicone making the fixtures robust and fit for outdoor too. Surface finish is clear.

Profiles are resistant to UV light and mechanical impacts. They won't go yellow due to PMMA and PC materials they comprise of.

Entertainment lighting provides much more than just the right level of brightness. It creates the mood and supports the compositions and concepts for the lighting designers. The right light becomes much more than just illumination, it becomes emotion, excitement, joy and drama. With our Vertical Tube fixtures, you can be sure of everlasting emotions.

Technology That Pushes

Limits

Technology for Innovators

RDM Monitoring

The lighting controls industry has evolved in favour of RDM. DMX512, the control standard across entertainment & architecture lighting controls, now offers two-way communications for configuration, monitoring and system setup via RDM protocol.

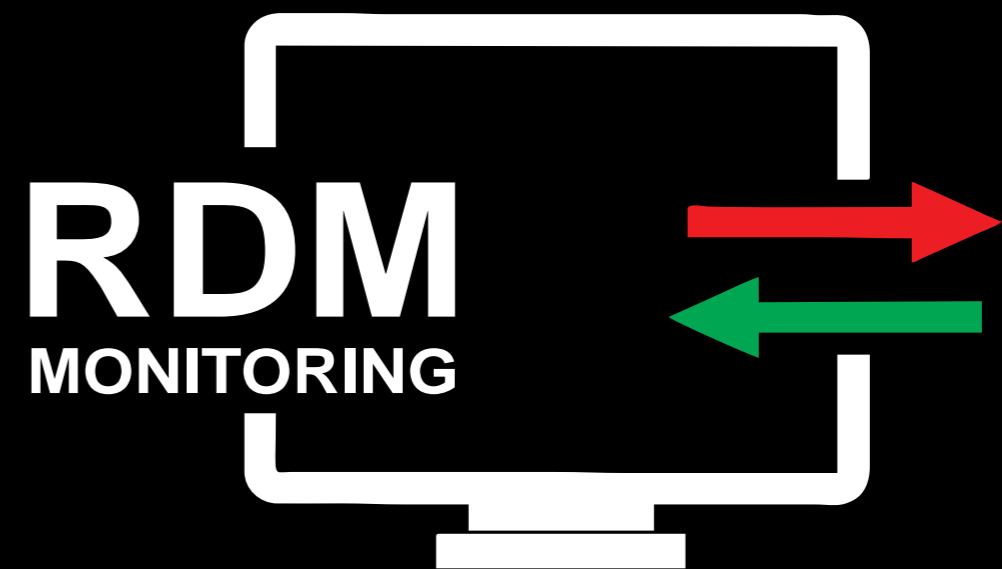
RDM is a killer way to work with your fixtures that are in the air while you are on the ground.

Did a stagehand or technician address 2 lights to the same address? Are some or all of your fixtures in the wrong mode? With RDM, you can change any of these things and more. Depending on your RDM controller, you either can work with 1 fixture at a time, or make changes to a number of fixtures very quickly.

In days before RDM, accessing functions and diagnostics of your fixture like the DMX address, control mode, lamp hour, and fan speed meant you had to be next to the fixture whether it was on the ground or 200 meters up in the air!

The RDM Protocol provides configuration and feedback from architecture lighting, theatre lighting systems, live events, and more. It works by sending pulses of data down the DMX line in-between the normal DMX commands. RDM actually communicates down the same lines as your DMX.

Many consoles and devices allow you to scan for RDM on an as-needed basis, or you can leave your RDM functionality on full-time. Hera LED fixtures, power supplies and splitters are completely compatible and compliant with RDM and have RDM monitoring features via Madrix controllers and software.



Madrix Radar Software

Hera LED's DMX lighting fixtures are also equipped with Remote Device Management. It is a two-way communication for receiving instructions as well as sending out feedback.

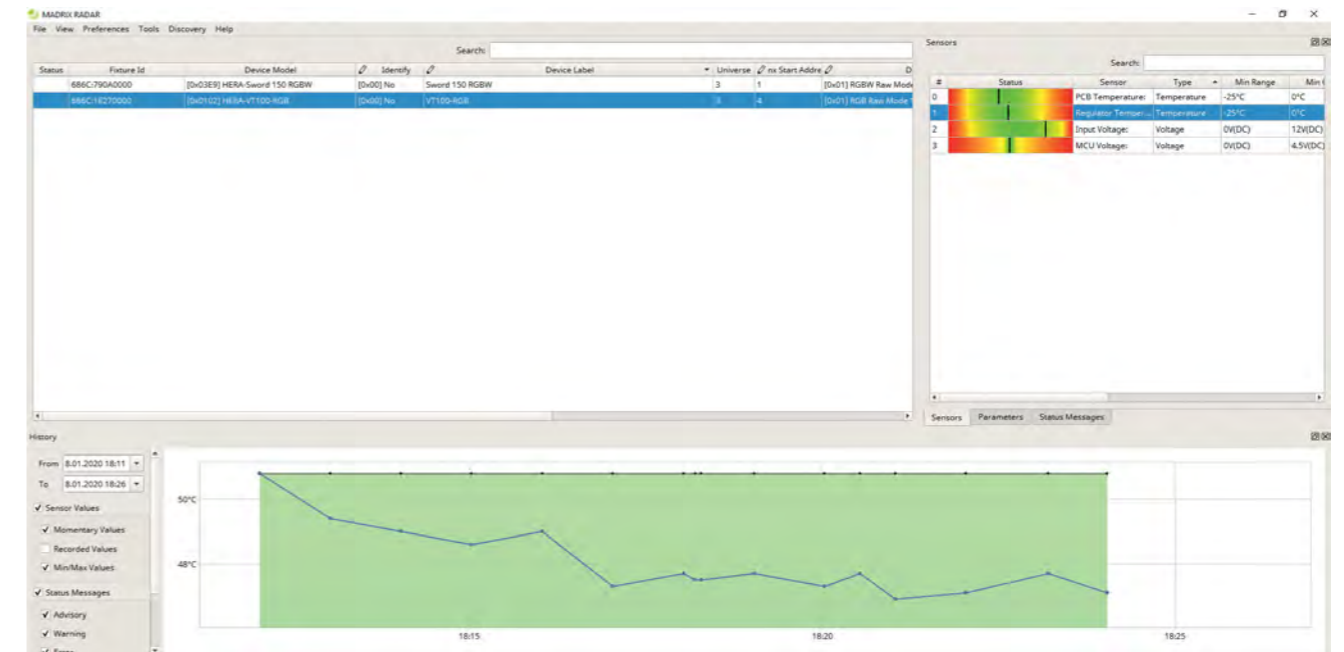
When devices report back data, you gain access to a whole new level of available information, insights, and control. MADRIX® RADAR is the complete toolbox to make the most of this data; automatically and efficiently.

With MADRIX® RADAR, one can supervise all lighting fixtures in a single software and handle large amounts of RDM devices. It is a new kind of application that opens up entirely new possibilities for you and your clients. MADRIX® RADAR includes automatic fixture patching, fully automatic 24/7 device monitoring, automatic e-mail notifications, and much more. This new software will allow you to configure settings remotely in an easy manner, monitor devices automatically for you, quickly see the results in graphical overviews at a single glance. That means that your setup and maintenance processes are much faster, much easier, and much more cost-efficient than ever before.

You can build a database of past sensor data and see the progression of device parameters, such as temperature and operating hours and exchange devices that are likely to fail soon. This way your maintenance costs are much more predictable.

Visualise how your system works.
Provide unparalleled support for each installation.
Start offering all-new benefits to your clients.
Unleash the full potential of RDM.

#	Status	Sensor	Type	Min Range	Min Okay	Min Detected	Value	Max Detected	Max Okay	Max Range	Record Value Support	Rec
0		PCB Temperature	Temperature	-25°C	0°C	0°C	35.8°C	38.5°C	85°C	125°C	[0x01] Recorded Value Supported	
1		Regulator Temper...	Temperature	-25°C	0°C	0°C	47.1°C	50.8°C	85°C	125°C	[0x01] Recorded Value Supported	
2		Input Voltage	Voltage	0V(DC)	12V(DC)	0V(DC)	46.9V(DC)	47V(DC)	55V(DC)	60V(DC)	[0x01] Recorded Value Supported	
3		MCU Voltage	Voltage	0V(DC)	4.5V(DC)	0V(DC)	4.9V(DC)	4.9V(DC)	5.5V(DC)	10V(DC)	[0x01] Recorded Value Supported	



UNLEASH THE FULL POTENTIAL OF RDM

TRANSFORM HOW YOU WORK WITH LUMINARIES. EASILY CONFIGURE SETTING REMOTELY. LET THE SOFTWARE MONITOR DEVICES AUTOMATICALLY FOR YOU

AUTOMATIC E-MAIL NOTIFICATIONS

PROVIDE UNPARALLELED SUPPORT FOR EACH INSTALLATION. START OFFERING ALL NEW BENEFITS TO YOUR CLIENTS

FULLY AUTOMATIC 24/7 DEVICE MONITORING

BUILD A DATABASE OF PAST SENSOR DATA AND SEE THE PROGRESS ON OF DEVICE PARAMETERS. SUCH AS TEMPERATURE AND OPERATING HOURS

INTRODUCING MADRIX RADAR

FULLY AUTOMATIC 24/DEVICE MONITORING. AUTOMATIC E-MAIL NOTIFICATIONS. UNLEASH THE FULL POTENTIAL OF RDM

Continuous Monitoring on Sensor Data

Let the software monitor all of your devices 365 days a year, 7 days a week, 24 hours a day. It does so fully automatically without any required supervision.

MADRIX® RADAR checks the status of devices, such as voltage, temperature, status, power cycle, life cycle, and more. Graphical overviews allow you to quickly see if a sensor value is within its specified limits or out of its valid range.

Simplified Fixture Addressing by Addressing

Easily set up your RDM devices remotely. You can perform any configuration conveniently from your computer; instead of requiring direct access to the devices.

Fast Workflow with Powerful Automation

Drastically reduce the time-consuming process of configuring a large number of devices. Use the built-in search function and change settings of a single device or select several entries to quickly make multiple changes at once.

Let the software automatically patch all fixtures in a single DMX universe or across the entire range of addresses. Simply use drag and drop to put them in the correct order.

Fixture Discovery and Full Support on RDM

Use the built-in highlight mode to let a fixture flash with full-on white for quick identification of fixtures. See if devices correctly responds to DMX commands.

MADRIX® RADAR supports all RDM parameters detailed in the official protocol specifications of ANSI E1.20 and ANSI E1.37-1 over Art-Net.

Automatic Notifications and Event Reports

In addition to merely requesting and receiving information, the software will apply its own logical routines in order to create events for you. By probing and validating incoming data, MADRIX® RADAR provides actionable reports for you.

If MADRIX® RADAR detects any irregularities, you can receive automatic status updates within the software, run a PowerShell script, or let the system conveniently send you e-mails.

Invaluable Data History

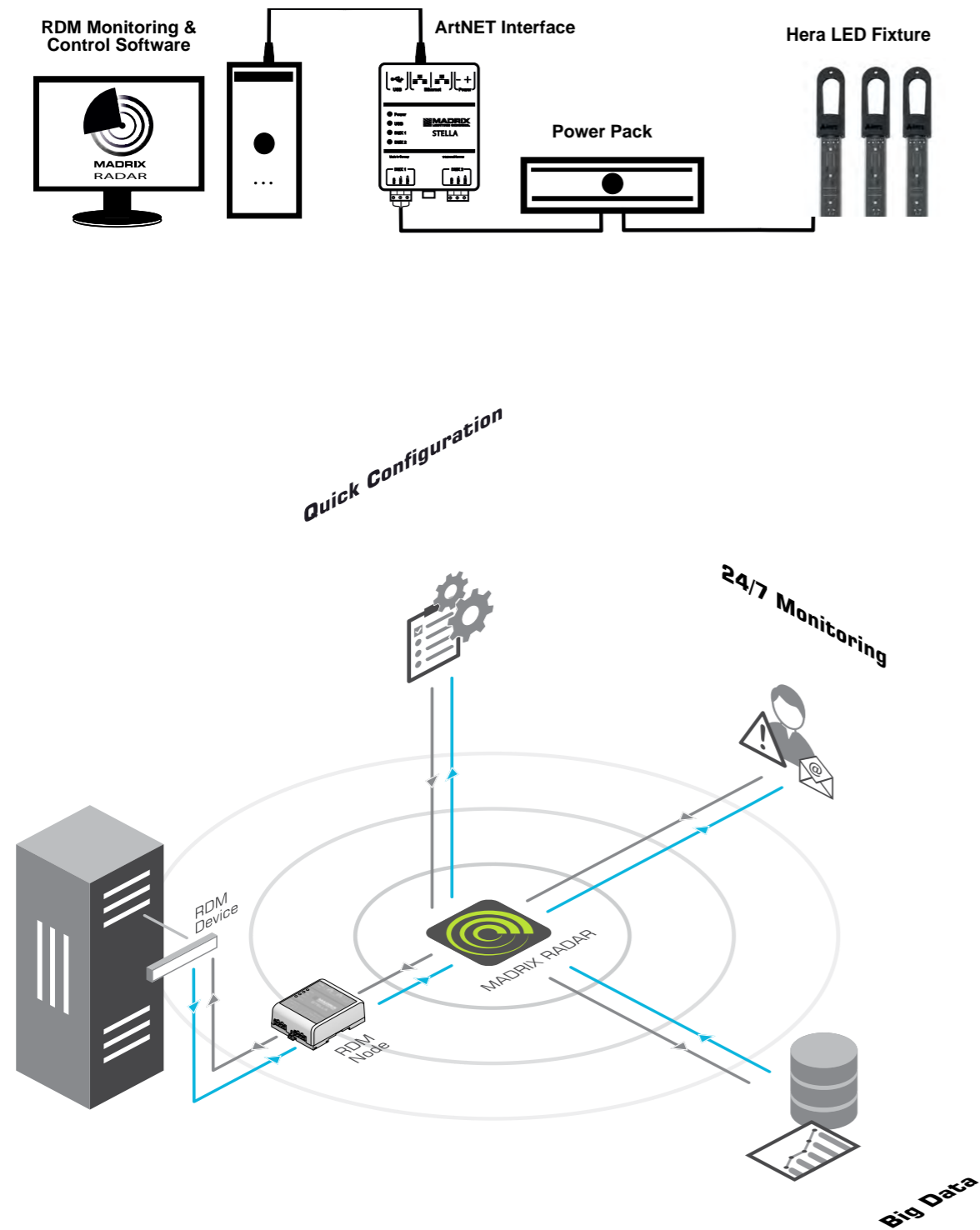
Leverage the valuable information that a device's data history can provide. See individual time series graphically over time. Access data records to see the progression, and find trend lines.

Smart Data Management

Present comprehensive statistics to your clients based on the data that MADRIX® RADAR is collecting. Replace failing devices and avoid replacing the ones that need no immediate replacement. You can freely enable or disable if data points are recorded, for example.

Setup & Configuration

With License Model Integra Flexibly Into Your Projects



The MADRIX® System takes advantage of high-quality software and high-quality hardware.

	MADRIX® RDM Nodes		Third-Party RDM Nodes & MADRIX® RADAR License			
			MADRIX® RADAR fusion small	MADRIX® RADAR fusion medium	MADRIX® RADAR fusion large	
RDM Devices/Sub-Devices	Automatically unlocks for all connected RDM devices/sub-devices.		2	32	256	2,048
Management	Yes	Yes	Yes	Yes	Yes	
Configuration	Yes	Yes	Yes	Yes	Yes	
Monitoring	Yes	Yes	Yes	Yes	Yes	



MADRIX RADAR is an independent software that allows you to choose compatible RDM nodes. You gain the enormous advantage with MADRIX RDM nodes of running a fully integrated system. MADRIX hardware processes RDM data packages in a way that does not result in interference with DMX data packages during full and live operation, which could lead to visual flickering or other signal interruptions.

MADRIX interfaces manage these data streams highly efficiently and intelligently.

Do It Right The First Time

Vertical Tube fixtures are produced in 500mm / 1000mm / 1500mm / 2000mm lengths for different applications. Clear body is the standard but opaque and translucent options can be provided. Fixtures are installed very easily by push lock mechanism with special top cover and mounting device.

Housing is extruded polycarbonate. End cap material and installation brackets are die-cast polycarbonate. All hardware is stainless steel and gaskets are silicone making the fixtures very robust and totally fit for outdoor. Surface finish is clear. Profiles are resistant to UV and mechanical impacts. They won't go yellow due to PMMA and PC materials they comprise of.



Die-cast Plastic Hanging Bracket

Die-cast Polycarbonate UV and Impact Resistant Clear Diffuser

LEDs on both sides



2+4 Pin Waterproof Push Lock Type Connector



No-screw Assembly with Clips Lock System



3D VERTICAL TUBE CONNECTIONS

Hera LED offers one of world's most comprehensive and competitive range of luminaires, control systems and software to answer the creative needs of lighting designers working in entertainment and architecture applications.

Vertical Tubes are ideal for creative installations in entertainment.

Vertical Tube connections are made by push lock type T connectors.

These T connectors are 2+4 pin type and have differing lengths to fit all customers' requests.



Light That Reaches Everywhere

Hera LED offers one of world's most comprehensive and competitive range of luminaires, control systems and software to answer the creative needs of lighting designers working in entertainment and architecture applications.

Vertical Tubes are ideal for creative installations in entertainment. They are driven by the Madrix Controller family for easy setup and display animation, it is also backwards compatible with DMX. All fixture types can be customized in terms of length and color to match every installation requirement. All fixtures also have RDM monitoring feature, at sensor level (temperature, voltage), going much deeper than fixture level, which allows you to make preventive maintenance in an easy way. With Vertical Tube series and Madrix Software & Controller family, you will have full control of your premise.

3D Vertical Tube Series are designed for 3D visual lighting at night clubs, atriums, shopping centers, and high-ceiling hotel lobbies. They are also fit for sound and light systems and rental company usage. They can be seen from a wide outlook angle (130 degrees x 2) and have a very lightweight body, easing installation. 2D objects are converted into 3D objects by pixel mapping effects and advanced programming technologies. Vertical tubes provide dynamic lighting solutions with its unlimited pixel options and advanced accessories.

Vertical Tube Dynamic White Series

Desired animations can be achieved using LEDs at range of color temperatures between 2700K and 6500K.

Vertical Tube RGB Series

Number of pixels of the fixtures can be changed for optimized appearance and scenario variations. The 3-channel system can control 3 colors per pixel through RGB algorithms. All customization options can be chosen remotely through DMX 512 protocol.

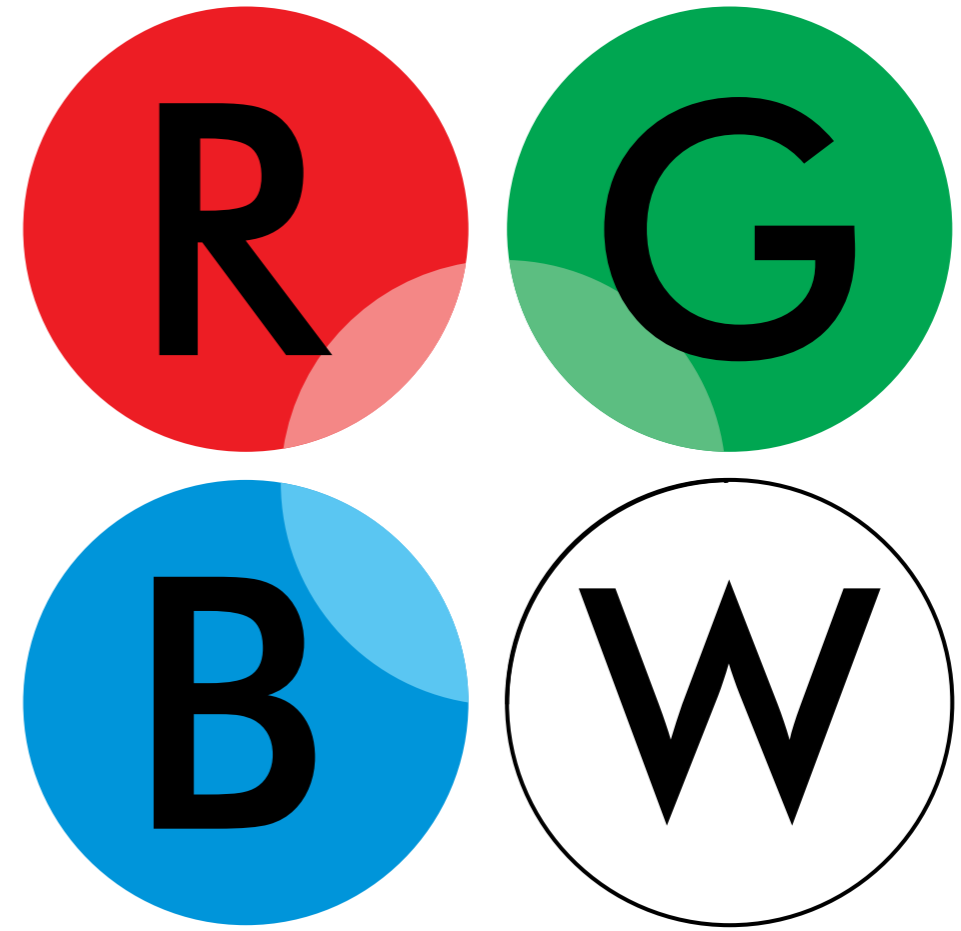
Vertical Tube RGBW Series

Number of pixels of the fixtures can be changed for optimized appearance and scenario variations. 3D Vertical Tube RGBW can be used in 4 channels through DMX Personality. The 3-channel system can control 4 colors per pixel through RGB + smart white algorithms. All customization options can be chosen remotely through DMX 512 protocol.

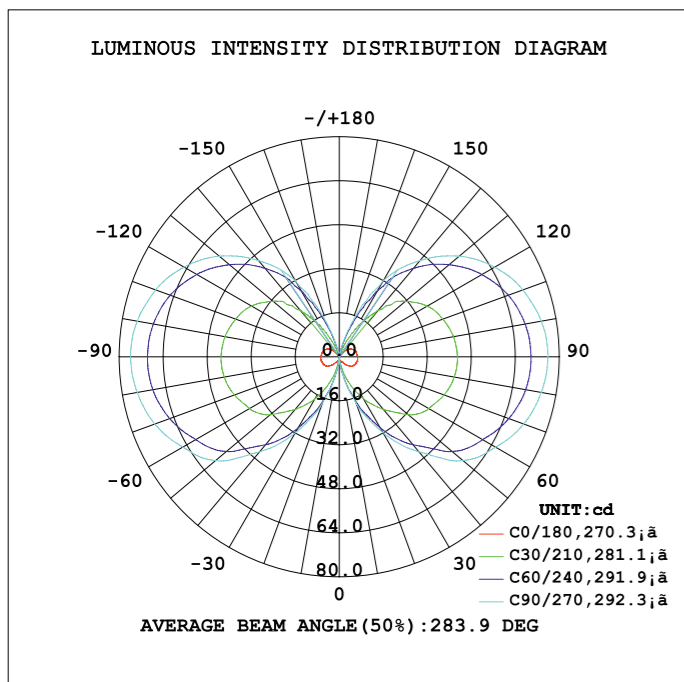
Enhance Your Light

We deliver high-performance professional LED lighting systems in a wide range of types, form factors, and output levels empowering lighting professionals around the world to achieve their projects.

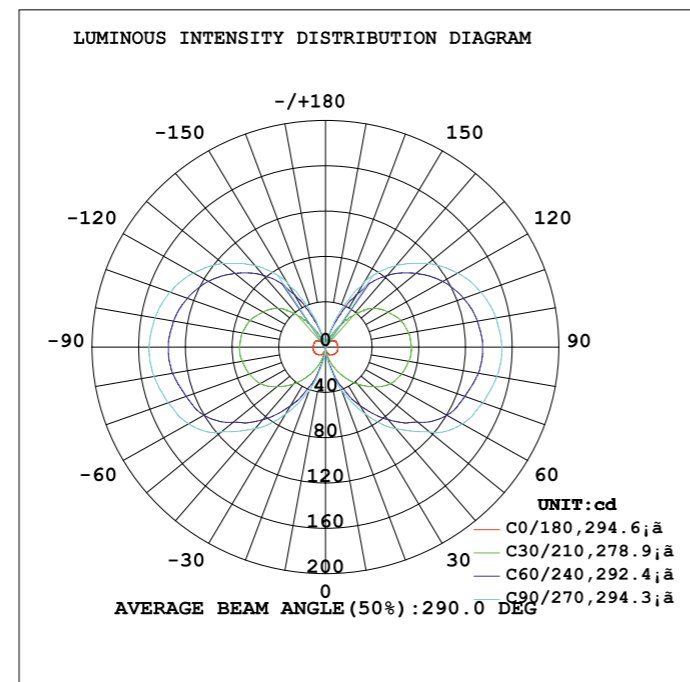
Vertical tubes deliver high-intensity light in all directions. The colored light emitted, with automated animations, form variety of effects, specially in entertainment sector.



3D Vertical Tube RGB SERIES FULL ON



3D Vertical Tube RGBW SERIES FULL ON



Our AutoWhite Technology in 3D Vertical Tube

Autowhite algorithm enable auto control of the white LED by 3-channel RGB. With RGB+smart white algorithm, the 3 channel system controls 4 colors per pixel. This allows RGBW usage with less DMX universes and optimises the cost of the project with same color output and improved brightness. Brightness of the White is calculated with an algorithm, from brightness of R, G and Blue. This increases brightness of Red, Green and Blue as well as the White.

This simple yet useful algorithm combined with our cutting-edge facade lighting solutions, turn your building into a real landmark. We can illuminate architectural high-lights and even design fascinating color and light effects on exterior facades.

3D Vertical Tube RGB Series

Specification

	500mm	1000mm	1500mm	2000mm
Output				
Light Source:	56pcs/m High intensity 3 in 1 Chip RGB LEDs (Double Sided)			
LED Pitch:	35mm			
Lumen Maintenance:	60.000 > hours L70 @ 50° C (full output)			
Color Range:	16.7 Million additive RGB colors			
Beam Angle:	284° Measurement Result, 360° Visibility			
Luminous Flux:	492 lm/m			
Luminous Intensity:	77 cd/m			
Efficacy (lm/W):	31 lm/W			
<i>*Photometric performance is measured in compliance with IESNA LM 79-08</i>				
Control & Programming				
Pixel Pitch:	Pixel pitch is configurable via RDM, max 28pixel/m			
Color Resolution:	3 x 14-bit (Gamma correction)			
Addressing:	RDM (Group of Remote Addressable Systems)			
Monitoring:	Voltage Monitoring, Temperature Monitoring, Status Monitoring, Power Cycle Monitoring, Lumen-Maintenance Life Monitoring			
PWM Frequency:	1,600Hz flicker free dimming to 0.1%			
DMX Compliance:	USITT DMX512-1990			
RDM Compliance:	ANSI/ESTA E1.20-2010			
Electrical				
Operating Voltage:	48VDC			
Power Consumption:	8W	16W	24W	32W
	15,84 W/m Maximum at full output, steady state			
Maximum in Chain:	Max 20 meters or 32 pieces (varies by selected dmx personality)			
Connections:	Push Lock Type 2+4 Pin Waterproof Connector			
Physical				
Housing:	Extruded Polycarbonate			
End Cap Material:	Die-Cast Polycarbonate			
Installation Brackets:	Die-Cast Polycarbonate			
Hardware:	Stainless Steel			
Gasket:	Silicon			
Surface Finish:	Clear			
Measurements:				
Weight:	0,444kg (0,81lb)	0,479kg (0,92lb)	0,487kg (0,94lb)	0,521kg (1,01lb)
Dimensions: (H x W x D)	Ø39x593,5mm (1,5x23,3 in)	Ø39x1093,5mm (1,5x43 in)	Ø39x1593,5mm (1,5x62 in)	Ø39x2093,5mm (1,5x82,4 in)
Environmental				
Storage Temperature:	-40°C - 85°C - (-40°F - 185°F)			
Start-up Temperature:	-25°C - 50°C - (-13°F - 122°F)			
Operating Temperature:	-40°C - 50°C - (-40°F - 122°F)			
Thermal Protection:	Automatic over temperature protection			
Cooling:	Cooling by free air convection			
Vibration Resistance:	Complies with ANSI C136.31-2010			
Corrosion Resistance:	Complies with ASTM B117 standard			
Ingress Protection Rating:	IP65			
Impact Resistance Rating:	IK07			
Humidity (max.):	0 to 98%, non-condensing			
Certification				
EU Safety:	EN 60598-1, EN 60598-2-3, EN 62471, EN 60950-1, EN 60950-22, EN 60529, EN 62262			
EU EMC:	EN 55024, EN 55032, EN 61000-4-2, EN 61000-4-3, EN 61000-4-4, EN 61000-4-5, EN 61000-4-6, EN 61000-4-8			
US Safety:	UL 1598, UL 60950-1, UL 60950-22			
US EMC:	FCC Part 15 Class A			
Warranty:	5-year Limited Warranty			

3D Vertical Tube RGBW Series

Specification

	500mm	1000mm	1500mm	2000mm
Output				
Light Source:	56pcs/m High intensity 4 in 1 Chip RGBW LEDs (Double Sided)			
LED Pitch:	35mm			
Lumen Maintenance:	60.000 > hours L70 @ 50° C (full output)			
Color Range:	16.7 Million additive RGB colors, white CCT 6500K			
Beam Angle:	290° Measurement Result, 360° Visibility			
Luminous Flux:	945 lm/m			
Luminous Intensity:	151 cd/m			
Efficacy (lm/W):	47 lm/W			
<i>*Photometric performance is measured in compliance with IESNA LM 79-08</i>				
Control & Programming				
Pixel Pitch:	Pixel pitch is configurable via RDM, max 28 pixel/m			
Color Resolution:	4 x 14-bit (Gamma correction)			
Auto White:	Algorithms enable auto control of white LED by 3-channel RGB values			
Addressing:	RDM (Group of Remote Addressable Systems)			
Monitoring:	Voltage Monitoring, Temperature Monitoring, Status Monitoring, Power Cycle Monitoring, Lumen-Maintenance Life Monitoring			
PWM Frequency:	1,600Hz flicker free dimming to 0.1%			
DMX Compliance:	USITT DMX512-1990			
RDM Compliance:	ANSI/ESTA E1.20-2010			
Electrical				
Operating Voltage:	48VDC			
Power Consumption:	10W	20W	30W	40W
	20,16 W/m Maximum at full output, steady state			
Maximum in Chain:	Max 20 meters or 32 pieces (varies by selected dmx personality)			
Connections:	Push Lock Type 2+4 Pin Waterproof Connector			
Physical				
Housing:	Extruded Polycarbonate			
End Cap Material:	Die-Cast Polycarbonate			
Installation Brackets:	Die-Cast Polycarbonate			
Hardware:	Stainless Steel			
Gasket:	Silicon			
Surface Finish:	Clear			
Measurements:				
Weight:	0,444kg (0,81lb)	0,479kg (0,92lb)	0,487kg (0,94lb)	0,521kg (1,01lb)
Dimensions: (H x W x D)	Ø39x593,5mm (1,5x23,3 in)	Ø39x1093,5mm (1,5x43 in)	Ø39x1593,5mm (1,5x62 in)	Ø39x2093,5mm (1,5x82,4 in)
Environmental				
Storage Temperature:	-40°C - 85°C - (-40°F - 185°F)			
Start-up Temperature:	-25°C - 50°C - (-13°F - 122°F)			
Operating Temperature:	-40°C - 50°C - (-40°F - 122°F)			
Thermal Protection:	Automatic over temperature protection			
Cooling:	Cooling by free air convection			
Vibration Resistance:	Complies with ANSI C136.31-2010			
Corrosion Resistance:	Complies with ASTM B117 standard			
Ingress Protection Rating:	IP65			
Impact Resistance Rating:	IK07			
Humidity (max.):	0 to 98%, non-condensing			
Certification				
EU Safety:	EN 60598-1, EN 60598-2-3, EN 62471, EN 60950-1, EN 60950-22, EN 60529, EN 62262			
EU EMC:	EN 55024, EN 55032, EN 61000-4-2, EN 61000-4-3, EN 61000-4-4, EN 61000-4-5, EN 61000-4-6, EN 61000-4-8			
US Safety:	UL 1598, UL 60950-1, UL 60950-22			
US EMC:	FCC Part 15 Class A			
Warranty:	5-year Limited Warranty			

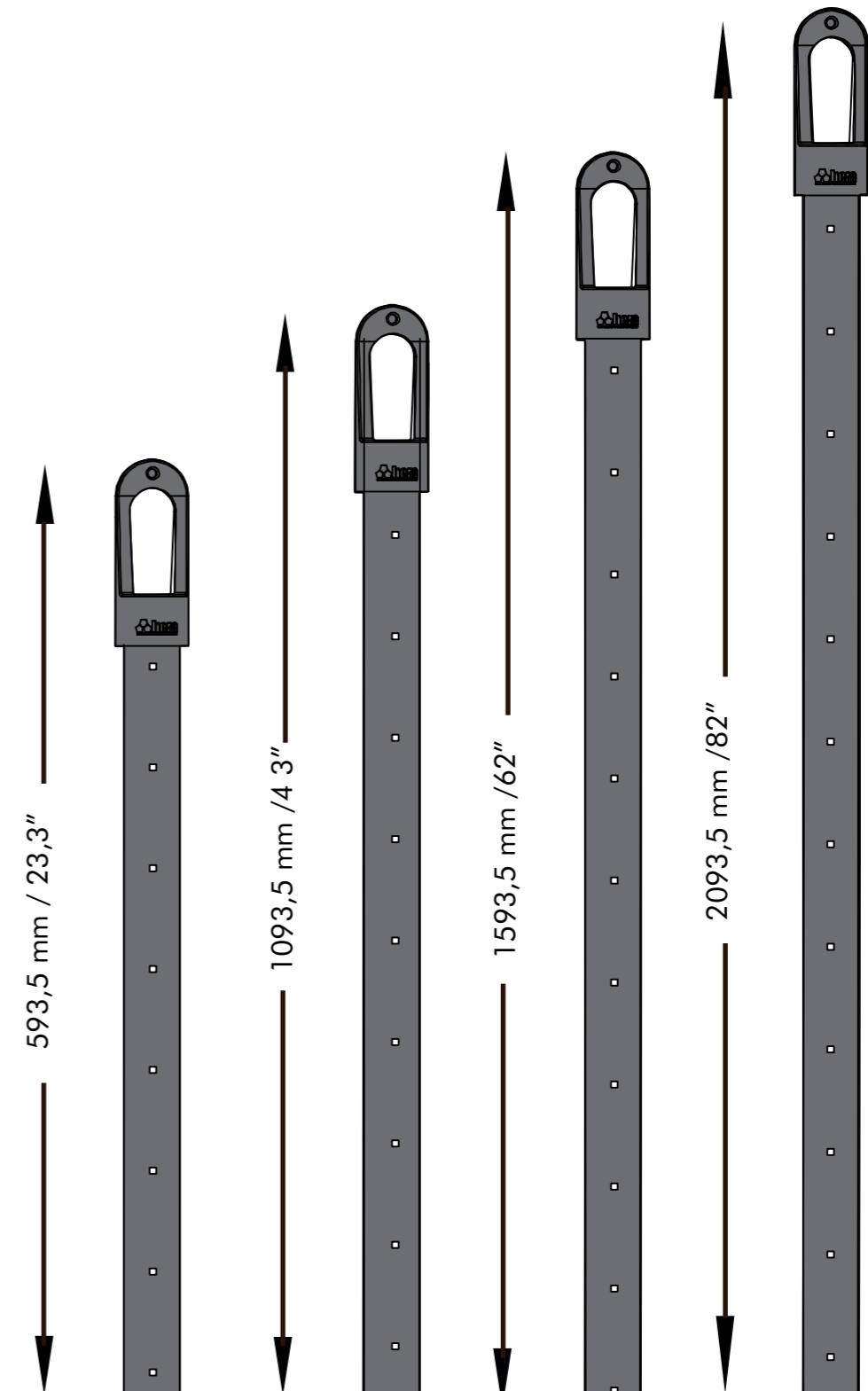
3D Vertical Tube DW Series Specification

	<u>500mm</u>	<u>1000mm</u>	<u>1500mm</u>	<u>2000mm</u>
Output				
Light Source:	56pcs/m 2700K LEDs + 56pcs/m 6500K LEDs (Double Sided)			
LED Pitch:	35mm			
Lumen Maintenance:	60.000 > hours L70 @ 50° C (full output)			
Color Range:	16.7 Million additive RGB colors			
Beam Angle:				
Luminous Flux:				
Luminous Intensity:				
Efficacy (lm/W):				
<i>*You can reach photometric datas (Ra(CRI), Beam Angle, Luminous Flux, Luminous Intensity, Efficacy) through " Photometric Measurement Report" in the web site</i>				
<i>*Photometric performance is measured in compliance with IESNA LM 79-08</i>				
Control & Programming				
Pixel Pitch:	Pixel pitch is configurable via RDM, max 56pixel/m			
Color Resolution:	3 x 14-bit (Gamma correction) x 14-bit (Gamma correction)			
Addressing:	RDM (Group of Remote Addressable Systems)			
Monitoring:	Voltage Monitoring, Temperature Monitoring, Status Monitoring, Power Cycle Monitoring, Lumen-Maintenance Life Monitoring			
PWM Frequency:	1,600Hz flicker free dimming to 0.1%			
DMX Compliance:	USITT DMX512-1990			
RDM Compliance:	ANSI/ESTA E1.20-2010			
Electrical				
Operating Voltage:	48VDC			
Power Consumption:	6W	12W	18W	24W
Maximum in Chain:	Max 20 meters or 32 pieces (varies by selected dmx personality)			
Connections:	Push Lock Type 2+4 Pin Waterproof Connector			
Physical				
Housing:	Extruded Polycarbonate			
End Cap Material:	Die-Cast Polycarbonate			
Installation Brackets:	Die-Cast Polycarbonate			
Hardware:	Stainless Steel			
Gasket:	Silicon			
Surface Finish:	Clear			
Mesuring:				
Weight:	0,444kg (0,81lb)	0,479kg (0,92lb)	0,487kg (0,94lb)	0,521kg (1,01lb)
Dimensions: (H x W x D)	Ø39x593,5mm (1,5x23,3 in)	Ø39x1093,5mm (1,5x43 in)	Ø39x1593,5mm (1,5x62 in)	Ø39x2093,5mm (1,5x82,4 in)
Environmental				
Storage Temperature:	-40°C - 85°C - (-40°F - 185°F)			
Start-up Temperature:	-25°C - 50°C - (-13°F - 122°F)			
Operating Temperature:	-40°C - 50°C - (-40°F - 122°F)			
Thermal Protection:	Automatic over temperature protection			
Cooling:	Cooling by free air convection			
Vibration Resistance:	Complies with ANSI C136.31-2010			
Corrosion Resistance:	Complies with ASTM B117 standard			
Ingress Protection Rating:	IP65			
Impact Resistance Rating:	IK07			
Humidity (max.):	0 to 98%, non-condensing			
Certification				
EU Safety:	EN 60598-1, EN 60598-2-3, EN 62471, EN 60950-1, EN 60950-22, EN 60529, EN 62262			
EU EMC:	EN 55024, EN 55032, EN 61000-4-2, EN 61000-4-3, EN 61000-4-4, EN 61000-4-5, EN 61000-4-6, EN 61000-4-8			
US Safety:	UL 1598, UL 60950-1, UL 60950-22			
US EMC:	FCC Part 15 Class A			
Warranty:	5-year Limited Warranty			

It's Our Choices That Show **What We Truly Are**

Vertical Tubes come in three light color options (RGB, RGBW, Dynamic White), 360 degree Visibility and four length options (500 mm, 1000 mm, 1500 mm, 2000 mm).

We can also make custom-made designs for specific requirements of projects with our producer identity. There is a Vertical Tube fixture that meets your every need.



3D Vertical Tube Series

Fixtures

RGB Series



P01040085 VT50-RGB 3D Vertical Tube
P01041085 VT100-RGB 3D Vertical Tube
P01042085 VT150-RGB 3D Vertical Tube
P01043085 VT200-RGB 3D Vertical Tube

RGBW Series



P01040105 VT50-RGBW 3D Vertical Tube
P01041105 VT100-RGBW 3D Vertical Tube
P01042105 VT150-RGBW 3D Vertical Tube
P01043105 VT200-RGBW 3D Vertical Tube

DW Series



P01040125 VT50-DW 3D Vertical Tube
P01041125 VT100-DW 3D Vertical Tube
P01042125 VT150-DW 3D Vertical Tube
P01043125 VT200-DW 3D Vertical Tube

3D Vertical Tube Series

Accessories, Cables, Power/Data Supplies

Cables



P20201-0.5 Push Lock Type 2+4 Pin 0.5M Extension Cable
P20201-0.75 Push Lock Type 2+4 Pin 0.75M Extension Cable
P20201-1 Push Lock Type 2+4 Pin 1M Extension Cable
P20201-1.5 Push Lock Type 2+4 Pin 1.5M Extension Cable
P20201-2 Push Lock Type 2+4 Pin 2M Extension Cable
P20201-2.5 Push Lock Type 2+4 Pin 2.5M Extension Cable
P20201-3 Push Lock Type 2+4 Pin 3M Extension Cable
P20201-3.5 Push Lock Type 2+4 Pin 3.5M Extension Cable
P20201-4 Push Lock Type 2+4 Pin 4M Extension Cable
P20201-5 Push Lock Type 2+4 Pin 5M Extension Cable
P20201-7.5 Push Lock Type 2+4 Pin 7.5M Extension Cable
P20201-10 Push Lock Type 2+4 Pin 10M Extension Cable
P20201-15 Push Lock Type 2+4 Pin 15M Extension Cable
P20201-20 Push Lock Type 2+4 Pin 20M Extension Cable

T Cable Connectors



P20204 2+4 Pin T Cable 0.3M Push Lock Type
P20205 2+4 Pin T Cable 0.6M Push Lock Type
P20206 2+4 Pin T Cable 1.2M Push Lock Type

Power/Data Supplies



P08002 Power Pack 320 320W 2 Outputs Power Supply
P08003 Power Pack 500 500W 2 Outputs Power Supply
P08004 Power Pack 1000 1000W 8 Outputs Power Supply
P08013 Power Pack 2000 2000W 8 Outputs Power Supply

Accessories



P20203 Push Lock Type 2+4 Pin Female Plug Cap

Reference Name: Metropol Istanbul Shopping Mall
Location: Istanbul, Turkey
Date: 2019

Hera LED has finalised a brand new lighting project in Istanbul. Metropol Istanbul is a huge contemporary multi-use complex with residences & an indoor-outdoor shopping mall. With over 800.000 m² open area, 80.000 m² rentable space, 250 shops, 330 m tower, 11.000 m² park area and 5.000 m² concert area, it is one of the biggest shopping malls in Istanbul and has LEED GOLD certificate (Leadership in Energy and Environmental Design). Our team has designed concept chandeliers specific for this project and illuminated all entrances of the shopping mall with our vertical tube product line. With Madrix controllers and software, vivid animations came to life and the shopping mall has become a center of fun and attraction.

Products used:

3D Vertical Tube Dynamic White Series	861	meter
Sword100x1 Dynamic White Series Dome	300	pieces
Custom Design DMX Dynamic White Chandelier	300	pieces
Madrix Luna 8	8	pieces
Madrix Luna 4	1	pieces
Madrix Ultimate Key	1	pieces



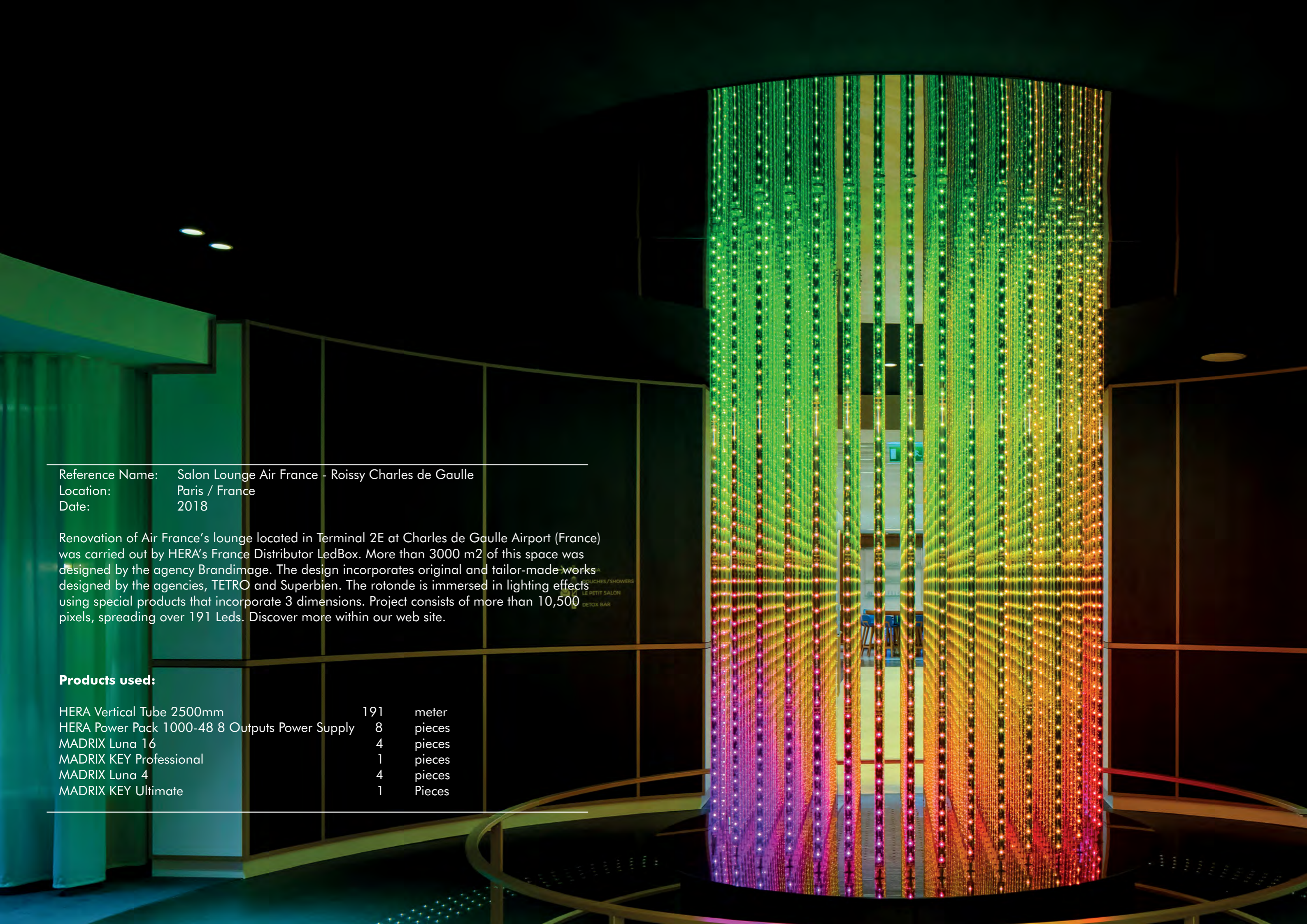
Reference Name: Delphin Botanik
Location: Alanya / Turkey
Date: 2014

Revolution Night Club is a real revolutionary project. We reach a climax in show illumination with a whole range of Hera products. Synchronization of music and light, enchant guests and provides a magnificent appearance.

Products used:

- HERA VT100 Plus 307 pieces
- HERA HT100 AC 28 pieces
- HERA PD20 Pixel Dot 3648 pieces
- HERA DTS-512 30 pieces
- MADRIX USB one 1 pieces
- MADRIX Luna 16 5 pieces
- MADRIX Key Professional 1 pieces





Reference Name: Salon Lounge Air France - Roissy Charles de Gaulle
Location: Paris / France
Date: 2018

Renovation of Air France's lounge located in Terminal 2E at Charles de Gaulle Airport (France) was carried out by HERA's France Distributor LedBox. More than 3000 m² of this space was designed by the agency Brandimage. The design incorporates original and tailor-made works designed by the agencies, TETRO and Superbien. The rotonde is immersed in lighting effects using special products that incorporate 3 dimensions. Project consists of more than 10,500 pixels, spreading over 191 Leds. Discover more within our web site.

Products used:

HERA Vertical Tube 2500mm	191	meter
HERA Power Pack 1000-48 8 Outputs Power Supply	8	pieces
MADRIX Luna 16	4	pieces
MADRIX KEY Professional	1	pieces
MADRIX Luna 4	4	pieces
MADRIX KEY Ultimate	1	Pieces



HERA EĞLENCE VE MİMARİ AYDINLATMA SİSTEMLERİ A.Ş
Gullubaglar Mah. Kahramanlar Cad. No:3-1
34906 Pendik / İstanbul / Turkey
+90 216 307 79 00
+90 216 307 79 02

www.heraled.com

info@heraled.com