



# PROCOLOR<sup>®</sup> DC

series







# All Can Be Overcome By **LIGHT**

Today, there are many fixtures available that serve a variety of purposes, and floodlights are one of them. Floodlights are great lighting fixtures that emit broad beams of light. As the name suggests, flood lights are used to flood an area with light and provides the best way to provide an enormous amount of non-natural light to a wide area.

LED floodlights are highly energy efficient and have a higher lumen per watt output than any other conventional lighting system. They are used for many purposes and allow a range of lighting techniques. Floodlight fixtures come in all sorts of sizes. They are great to illuminate dark areas for comfort, security, show and architectural lighting purposes.

Procolor® Series is a powerful and outdoor rated floodlight with high lumen output and excellent color consistency.

Procolor® floodlights are an excellent solution for accent lighting, spot lighting, wall washing and are widely used in illuminating historical places, monuments, also smaller structures in parks and other areas.

# Technology That Pushes

## Limits

### Technology for Innovators

#### RDM Monitoring

The lighting controls industry has evolved in favour of RDM. DMX512, the control standard across entertainment & architecture lighting controls, now offers two-way communications for configuration, monitoring and system setup via RDM protocol.

RDM is a killer way to work with your fixtures that are in the air while you are on the ground.

Did a stagehand or technician address 2 lights to the same address? Are some or all of your fixtures in the wrong mode? With RDM, you can change any of these things and more. Depending on your RDM controller, you either can work with 1 fixture at a time, or make changes to a number of fixtures very quickly.

In days before RDM, accessing functions and diagnostics of your fixture like the DMX address, control mode, lamp hour, and fan speed meant you had to be next to the fixture whether it was on the ground or 200 meters up in the air!

The RDM Protocol provides configuration and feedback from architecture lighting, theatre lighting systems, live events, and more. It works by sending pulses of data down the DMX line in-between the normal DMX commands. RDM actually communicates down the same lines as your DMX.

Many consoles and devices allow you to scan for RDM on an as-needed basis, or you can leave your RDM functionality on full-time. Hera LED fixtures, power supplies and splitters are completely compatible and compliant with RDM and have RDM monitoring features via Madrix controllers and software.





# Madrix Radar Software

Hera LED's DMX lighting fixtures are also equipped with Remote Device Management. It is a two-way communication for receiving instructions as well as sending out feedback.

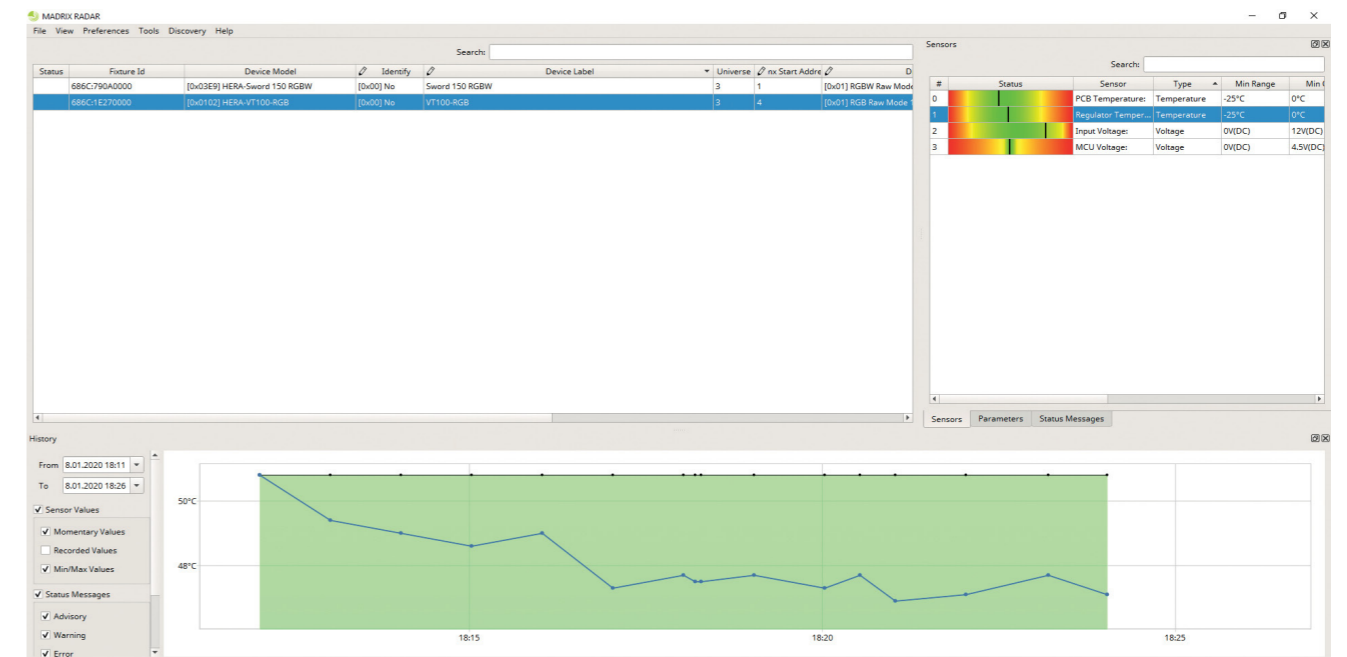
When devices report back data, you gain access to a whole new level of available information, insights, and control. MADRIX® RADAR is the complete toolbox to make the most of this data; automatically and efficiently.

With MADRIX® RADAR, one can supervise all lighting fixtures in a single software and handle large amounts of RDM devices. It is a new kind of application that opens up entirely new possibilities for you and your clients. MADRIX® RADAR includes automatic fixture patching, fully automatic 24/7 device monitoring, automatic e-mail notifications, and much more. This new software will allow you to configure settings remotely in an easy manner, monitor devices automatically for you, quickly see the results in graphical overviews at a single glance. That means that your setup and maintenance processes are much faster, much easier, and much more cost-efficient than ever before.

You can build a database of past sensor data and see the progression of device parameters, such as temperature and operating hours and exchange devices that are likely to fail soon. This way your maintenance costs are much more predictable.

Visualise how your system works.  
Provide unparalleled support for each installation.  
Start offering all-new benefits to your clients.  
Unleash the full potential of RDM.

#	Status	Sensor	Type	Min Range	Min Okay	Min Detected	Value	Max Detected	Max Okay	Max Range	Record Value Support	Rec
0		PCB Temperature:	Temperature	-25°C	0°C	0°C	35.8°C	38.5°C	85°C	125°C	[0x01] Recorded Value Supported	
1		Regulator Temper...	Temperature	-25°C	0°C	0°C	47.1°C	50.8°C	85°C	125°C	[0x01] Recorded Value Supported	
2		Input Voltage:	Voltage	0V(DC)	12V(DC)	0V(DC)	46.9V(DC)	47V(DC)	55V(DC)	60V(DC)	[0x01] Recorded Value Supported	
3		MCU Voltage:	Voltage	0V(DC)	4.5V(DC)	0V(DC)	4.9V(DC)	4.9V(DC)	5.5V(DC)	10V(DC)	[0x01] Recorded Value Supported	



**UNLEASH THE FULL  
POTENTIAL OF RDM**

**AUTOMATIC E-MAIL  
NOTIFICATIONS**

**FULLY AUTOMATIC 24/7  
DEVICE MONITORING**

**INTRODUCING  
MADRIX RADAR**

TRANSFORM HOW YOU WORK WITH LUMINARIES. EASILY CONFIGURE SETTING REMOTELY. LET THE SOFTWARE MONITOR DEVICES AUTOMATICALLY FOR YOU

PROVIDE UNPARALLELED SUPPORT FOR EACH INSTALLATION. START OFFERING ALL NEW BENEFITS TO YOUR CLIENTS

BUILD A DATABASE OF PAST SENSOR DATA AND SEE THE PROGRESS ON OF DEVICE PARAMETERS. SUCH AS TEMPERATURE AND OPERATING HOURS

FULLY AUTOMATIC 24/7 DEVICE MONITORING. AUTOMATIC E-MAIL NOTIFICATIONS. UNLEASH THE FULL POTENTIAL OF RDM



### **Continuous Monitoring on Sensor Data**

Let the software monitor all of your devices 365 days a year, 7 days a week, 24 hours a day. It does so fully automatically without any required supervision.

MADRIX® RADAR checks the status of devices, such as voltage, temperature, status, power cycle, life cycle, and more. Graphical overviews allow you to quickly see if a sensor value is within its specified limits or out of its valid range.

### **Simplified Fixture Addressing by Addressing**

Easily set up your RDM devices remotely. You can perform any configuration conveniently from your computer; instead of requiring direct access to the devices.

### **Fast Workflow with Powerful Automation**

Drastically reduce the time-consuming process of configuring a large number of devices. Use the built-in search function and change settings of a single device or select several entries to quickly make multiple changes at once.

Let the software automatically patch all fixtures in a single DMX universe or across the entire range of addresses. Simply use drag and drop to put them in the correct order.

### **Fixture Discovery and Full Support on RDM**

Use the built-in highlight mode to let a fixture flash with full-on white for quick identification of fixtures. See if devices correctly responds to DMX commands.

MADRIX® RADAR supports all RDM parameters detailed in the official protocol specifications of ANSI E1.20 and ANSI E1.37-1 over Art-Net.

### **Automatic Notifications and Event Reports**

In addition to merely requesting and receiving information, the software will apply its own logical routines in order to create events for you. By probing and validating incoming data, MADRIX® RADAR provides actionable reports for you.

If MADRIX® RADAR detects any irregularities, you can receive automatic status updates within the software, run a PowerShell script, or let the system conveniently send you e-mails.

### **Invaluable Data History**

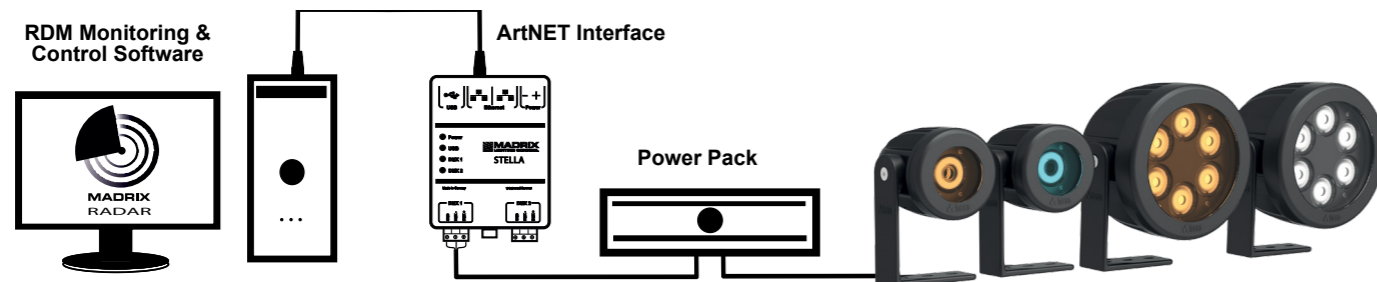
Leverage the valuable information that a device's data history can provide. See individual time series graphically over time. Access data records to see the progression, and find trend lines.

### **Smart Data Management**

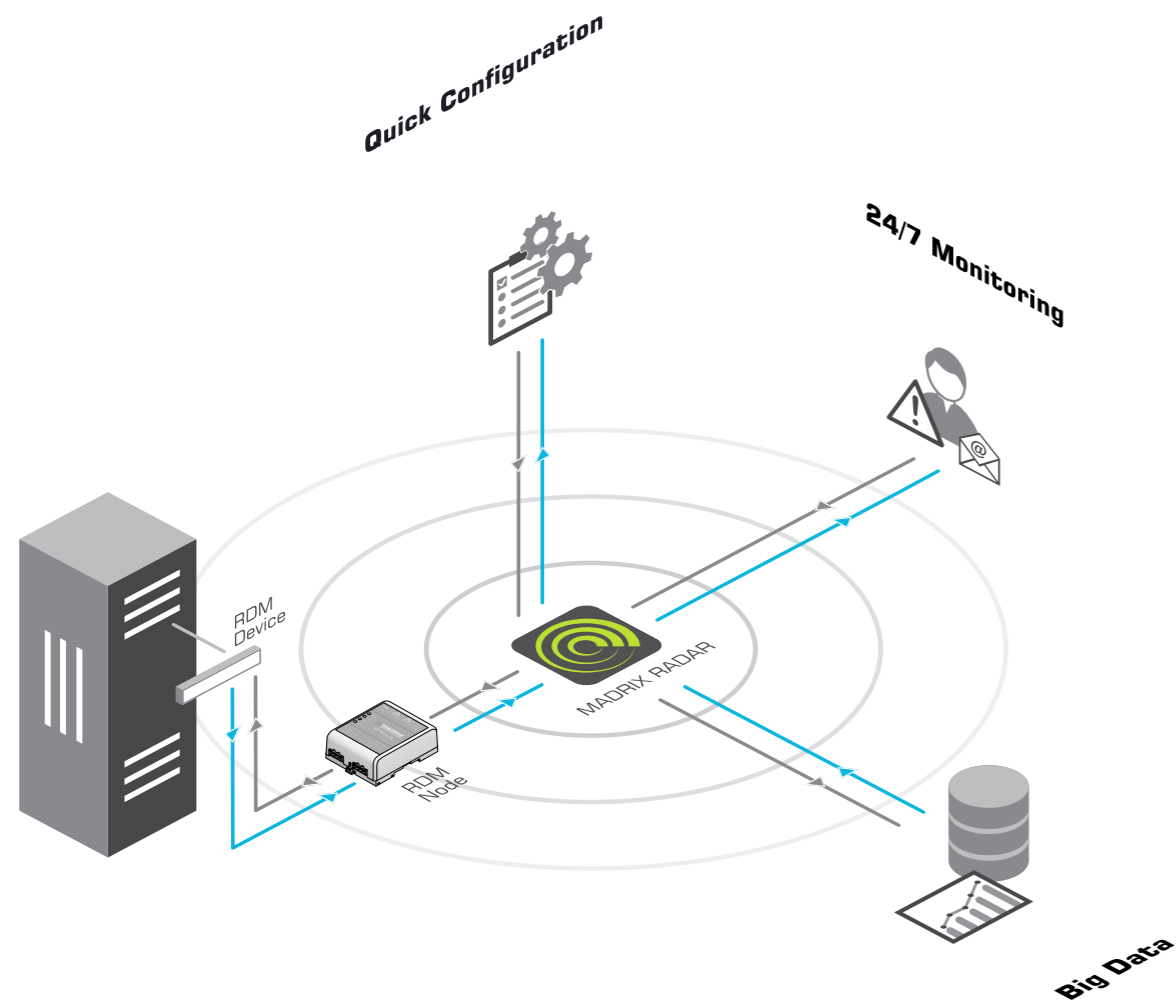
Present comprehensive statistics to your clients based on the data that MADRIX® RADAR is collecting. Replace failing devices and avoid replacing the ones that need no immediate replacement. You can freely enable or disable if data points are recorded, for example

# Setup & Configuration

# With License Model Integra Flexibly Into Your Projects



The MADRIX® System takes advantage of high-quality software and high-quality hardware.



	MADRIX® RDM Nodes		Third-Party RDM Nodes & MADRIX® RADAR License			
			MADRIX® RADAR fusion small	MADRIX® RADAR fusion medium	MADRIX® RADAR fusion large	
RDM Devices/Sub-Devices	Automatically unlocks for all connected RDM devices/sub-devices.		2	32	256	2,048
Management	Yes	Yes	Yes	Yes	Yes	
Configuration	Yes	Yes	Yes	Yes	Yes	
Monitoring	Yes	Yes	Yes	Yes	Yes	

MADRIX RADAR is an independent software that allows you to choose compatible RDM nodes. You gain the enormous advantage with MADRIX RDM nodes of running a fully integrated system. MADRIX hardware processes RDM data packages in a way that does not result in interference with DMX data packages during full and live operation, which could lead to visual flickering or other signal interruptions.

MADRIX interfaces manage these data streams highly efficiently and intelligently.





# MAKE A WORLD OF DIFFERENCE

Procolor® series shows off even the most intricate details of the architecture. It alights the architecture without disturbing any settings on the premise or the city surroundings. Procolors make a real feast of light with their strong illumination capability and various models to choose from. Series is mainly used to light up buildings, bridges, historical monuments and landscapes.





# Certification

Product complies with EU Safety regulations of EN 60598-1, EN 60598-2-3, EN 62471, EN 60950-1, EN 60950-22, EN 60529, EN 62262.

Product complies with EU EMC standards of EN 55024, EN 55032, EN 61000-4-3, EN 61000-4-4, EN 61000-4-6, EN 61000-4-8.

Product complies with US Safety standards of UL 1598, UL 60950-1, UL 60950-22 and US EMC standard of FCC Part 15 Class A.

We fully trust in our products and give 5-year warranty for all our product lines, subject to conditions given in the warranty agreement.

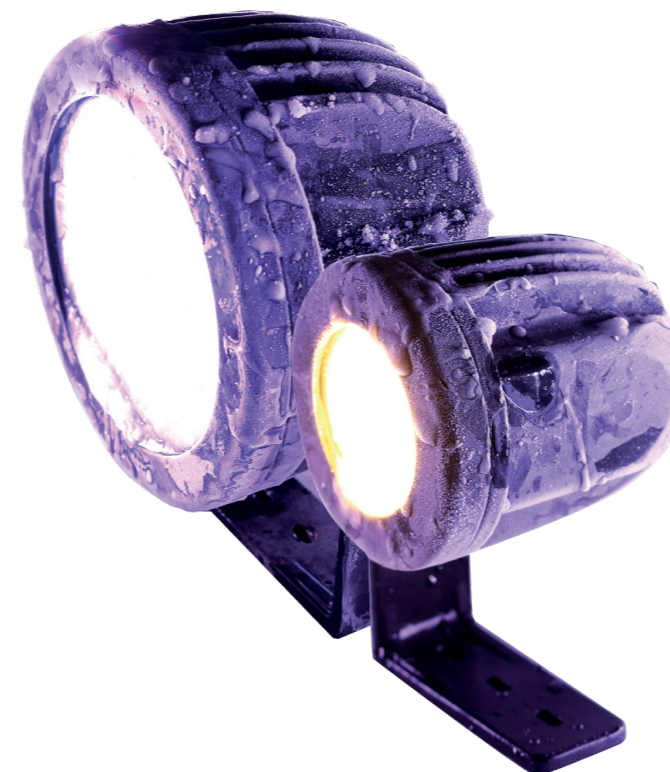
## Our Concern is Quality not Quantity

Consistent and exact colors, special effects and best light management in every possible application have become a vital part of floodlighting. Procolor series' customized and standard products will result in highly efficient and quality floodlighting.

Hera LED well knows the growing expectations of its customers when it comes to image quality, reliability, and cost. We will provide you with all you need, to illuminate, guide, reflect, and alter light for a variety of floodlighting applications.

Hera LED all in-house manufactured design for Procolor Series can be easily used in commercial and government buildings, hotels, historical monuments, museums, landscapes and many more different facade installations as requested.

## Reliability in Numbers



Procolors are in IP67-IK08 protection class and with their robust and durable structure, are designed to meet extremely difficult requirements of outdoor facade applications. Procolors are resistant to impact, vibration and other harsh conditions, with their aluminum housing and special filler materials. They have passed Verification and Reliability tests.

Our conventional fixtures stand the test of time, withstand even the harshest conditions, including dirty power, high-vibration, extreme temperatures and hazardous or volatile outdoor environments.

Facade lighting compliments the exterior. In architecture, the facade of a building is often the most important from a design standpoint, as it sets the tone for the rest of the building. With Procolors we set the most beautiful tones.



# PROCOLOR<sup>®</sup> DC series

Procolor<sup>®</sup> DC series is a durable line of LED fixtures designed specifically for floodlighting. It is lightweight and has a compact design ideal for use on all related facade applications. Spot and flood optics minimize glare and provide precise optical control.

LED technology increases efficiency, eliminates maintenance and supports green initiatives. Sleek and compact floodlights illuminate entire area with their high lumen output.

Procolor<sup>®</sup>DC Series is a powerful and outdoor rated floodlight with more than satisfactory lumen output and an excellent color consistency. Procolor<sup>®</sup>DC floodlights are the real solution for accent lighting, spot lighting, wall washing and widely used in illuminating historical places, monuments and also smaller structures in parks and other areas. Procolor<sup>®</sup>DC Series operates in 48V DC voltage range and available in 4 types.

Connector input and outputs are 2+4 pin pushlock type. Series has Autowhite feature in the RGBW model and RDM monitoring feature in all models.

Floodlights combine a reliable, traditional design with cutting-edge LED technology - all to meet your specific requirements.

Procolor<sup>®</sup> DC 60 series have RGBW (16.7 Million additive RGB colors, white CCT 6500K) option and DW (6pcs 2700K LEDs + 6pcs 6500K LEDs) option.

Procolor<sup>®</sup> DC 10 series have RGBW (16.7 Million additive RGB colors, white CCT 6500K)



# PROCOLOR® DC

Procolor DC family is made of aluminum cast material like the other Procolor series. Aluminum both gives robustness to the product as well as having a good cooling coefficient. It absorbs the heat and dissipates it through advanced cooling channels.

Procolor family is resistant to cold, snow, rain, dust and sand. It can keep on working under all harsh conditions. Moisture is emitted through specially designed valves within the product. Newly designed cable fitting for Procolors are IP67 class and can be relied on completely.

All Procolors can be adjusted and fixed to the product assembly area with 6 degree ascending angles.

The silicon gasket used within the device, complies with all European standards and provides complete insulation.



**Procolor® DC 10RGBW**  
**Procolor® DC 10DW**



**Procolor® DC 60RGBW**  
**Procolor® DC 60DW**







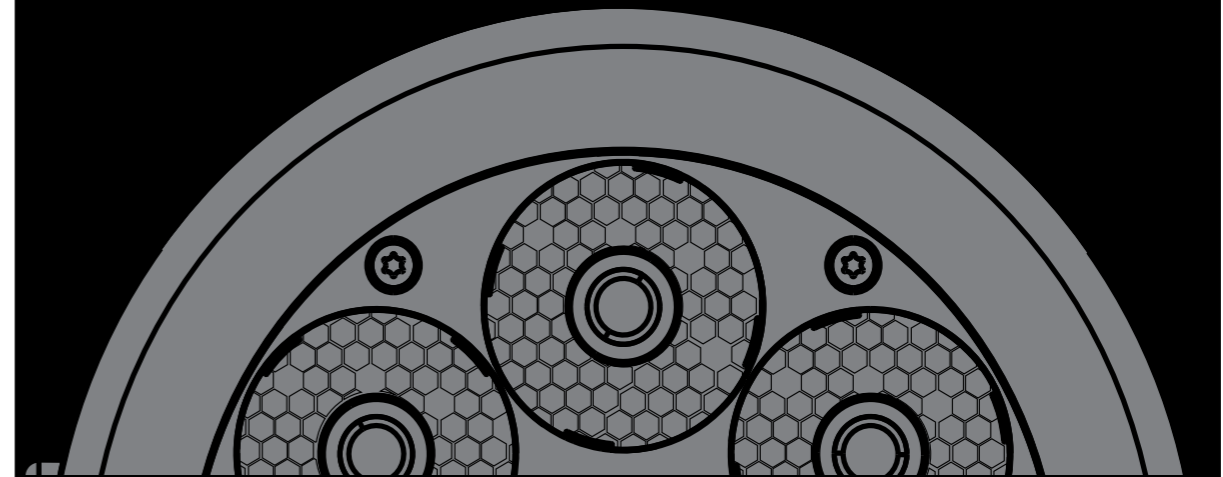
### Procolor® DC 10 Connection

Procolor® 10 DC products are connected to it each other via T cable connectors. T cable is an electrical connector that connects three cables together and is in shape of a capital T. It has three connector points, two male one female. This wiring is ideal for for reliable and secure connection whilst being quick and easy to use without need for specialist tools. They are also perfectly waterproof with IP 68 rating.

### Procolor® DC 60 Connection



In Procolor® DC 60 series we have a serial cable connection between products instead of T cables. In and outs are done via 2+4 pin pushlock connectors. Push-pull connectors are simply connectors that lock, providing a secure mating system in mission-critical applications. They are used externally on equipment that requires connectors to be cycled many times over the system lifespan and are very resistant. Even after these high numbers of mating cycles, the contact resistance increase only a few milli-ohms. Our push-pull connectors are lightweight but they are rugged, offering thousands of mating cycles. They are again IP68 and completely waterproof.

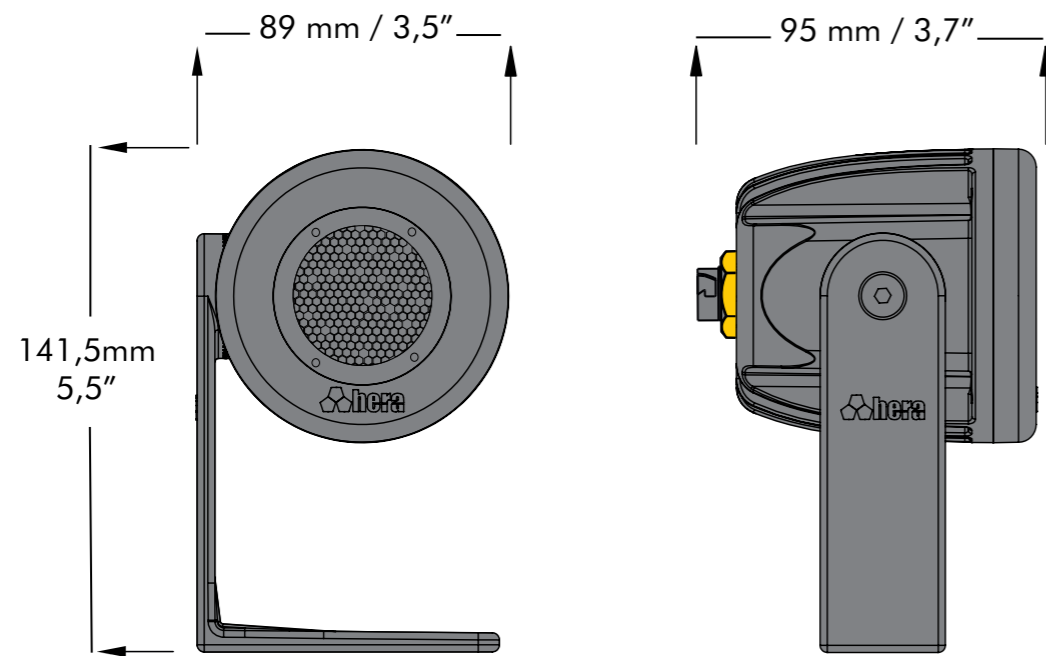


**Professional Lighting Is Done  
With Professional Products**

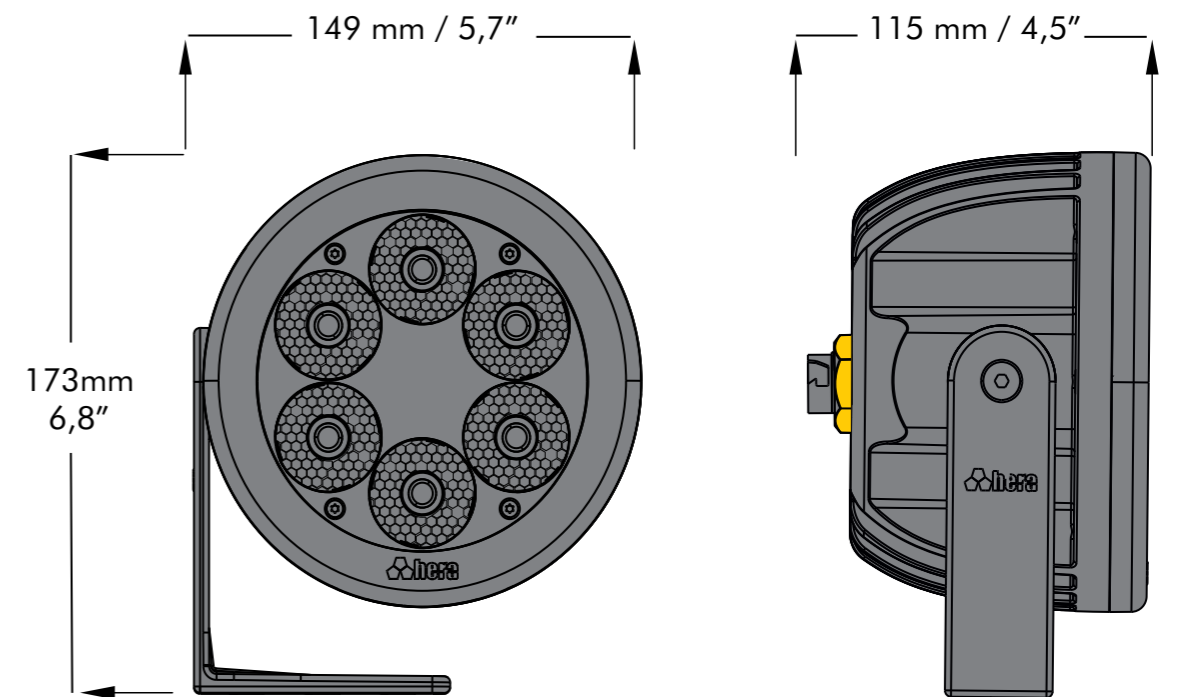
**PROCOLOR® DC**  
series

# PROCOLOR<sup>®</sup> FamilySize

PROCOLOR<sup>®</sup>DC 10RGBW  
PROCOLOR<sup>®</sup>DC 10DW



PROCOLOR<sup>®</sup>DC 60RGBW  
PROCOLOR<sup>®</sup>DC 60DW





# Procolor® DC 10 Series

## Specification

### PROCOLOR® DC 10 RGBW

#### Output

Light Source:	1 High Power 4 in 1 Chip RGBW LEDs per foot
Lumen Maintenance:	60.000 > hours L70 @ 50° C (full output)
Color Range:	16.7 Million additive RGB colors, white CCT 6500K
Ra(CRI):	RGBW Full on 81CRI
Beam Angle:	10° / 25° / 35°
Luminous Flux:	287 lm
Luminous Intensity:	1926 cd
Efficacy (lm/W):	33,1 lm/W

### PROCOLOR® DC 10 DW

Light Source:	4 High Power LEDs (2x 2700K, 2x 6500K)t
Color Range:	Color temperatures ranging from 2700 K to 6500 K
Ra(CRI):	DW Full on 74CRI
Luminous Flux:	365 lm
Luminous Intensity:	2646 cd
Efficacy (lm/W):	42,2 lm/W

\*The values above are measured data in RGBW-DW "Full ON" mode and using a 10° lens.  
Please see IES/LTD files and photometric measurements for different lens beam angles.

\*Photometric performance is measured in compliance with IESNA LM 79-08

The dynamic power-boost feature enables the light to display the maximum brightness at all times and intensify non-white colors

#### Control & Programming

Color Resolution:	4 x 14-bit (Gamma correction)	2 x 14-bit (Gamma correction)
Addressing:	RDM (Group of Remote Addressable Systems)	
Monitoring:	Voltage Monitoring, Temperature Monitoring, Status Monitoring, Power Cycle Monitoring, Lumen-Maintenance Life Monitoring	
PWM Frequency:	1,600Hz flicker free dimming to 0.1%	
DMX Compliance:	USITT DMX512-1990	
RDM Compliance:	ANSI/ESTA E1.20-2010	

#### Electrical

Operating Voltage:	48VDC
Power Consumption:	8,7W Maximum at full output, steady state
Maximum in Chain:	Max 32 pieces
Connections:	Push Lock Type 2+4 Pin Waterproof Connector

#### Physical

Housing:	Die-Cast Aluminium
Front Material:	Clear Tempered Glass
Installation Brackets:	Die-Cast Aluminium 6° Multi-positional, locking hinges
Hardware:	Stainless Steel
Gasket:	Silicon
Surface Finish:	RAL 9005 Electrostatically polyester powder coat (standard) or Custom Any RAL (optional)

#### Measurements:

Weight:	0,800Kg (1,76lb)	0,800Kg (1,76lb)
Dimensions: (H x W x D)	141,5x89x95mm 5,6x3,5x3,7in	141,5x89x95mm 5,6x3,5x3,7in

#### Environmental

Storage Temperature:	-40°C - 85°C (-40°F - 185°F)
Start-up Temperature:	-25°C - 50°C (-13°F - 122°F)
Operating Temperature:	-40°C - 50°C (-40°F - 122°F)
Thermal Protection:	Automatic over temperature protection
Cooling:	Cooling by free air convection
Vibration Resistance:	Complies with ANSI C136.31-2010
Corrosion Resistance:	Complies with ASTM B117 standard
Ingress Protection Rating:	IP67
Impact Resistance Rating:	IK08
Humidity (max.):	0 to 98%, non-condensing

#### Certification

EU Safety:	EN 60598-1, EN 60598-2-5, EN 62471, EN 60529, EN 62262
EU EMC:	EN 55015, EN 61000-3-2, EN 61000-3-3, EN 61547, EN 61000-4-2, EN 61000-4-3, EN 61000-4-4, EN 61000-4-5, EN 61000-4-6, EN 61000-4-8, EN 61000-4-11
US Safety:	UL 1598
US EMC:	FCC Part 15 Class A
Warranty:	5-year Limited Warranty

# Procolor® DC 60 Series

## Specification

### PROCOLOR® DC 60 RGBW

#### Output

Light Source:	6 High Power 4 in 1 Chip RGBW LEDs
Lumen Maintenance:	60.000 > hours L70 @ 50° C (full output)
Color Range:	16.7 Million additive RGB colors, white CCT 6500K
Ra(CRI):	RGBW Full on 81CRI
Beam Angle:	10° / 25° / 35°
Luminous Flux:	1564 lm
Luminous Intensity:	9411 cd
Efficacy (lm/W):	38,8 lm/W

### PROCOLOR® DC 60 DW

Light Source:	24 High Power LEDs (12x 2700K, 12x 6500K)
Color Range:	Color temperatures ranging from 2700 K to 6500 K
Ra(CRI):	DW Full on 74CRI
Luminous Flux:	2160 lm
Luminous Intensity:	13853 cd
Efficacy (lm/W):	53,6 lm/W

\*The values above are measured data in RGBW-DW "Full ON" mode and using a 10° lens.  
Please see IES/LTD files and photometric measurements for different lens beam angles.

\*Photometric performance is measured in compliance with IESNA LM 79-08

The dynamic power-boost feature enables the light to display the maximum brightness at all times and intensify non-white colors

#### Control & Programming

Color Resolution:	4 x 14-bit (Gamma correction)	2 x 14-bit (Gamma correction)
Addressing:	RDM (Group of Remote Addressable Systems)	
Monitoring:	Voltage Monitoring, Temperature Monitoring, Status Monitoring, Power Cycle Monitoring, Lumen-Maintenance Life Monitoring	
PWM Frequency:	1,600Hz flicker free dimming to 0.1%	
DMX Compliance:	USITT DMX512-1990	
RDM Compliance:	ANSI/ESTA E1.20-2010	

#### Electrical

Operating Voltage:	48VDC
Power Consumption:	40,3W Maximum at full output, steady state
Maximum in Chain:	Max 32 pieces
Connections:	Push Lock Type 2+4 Pin Waterproof Connector

#### Physical

Housing:	Die-Cast Aluminium
Front Material:	Clear Tempered Glass
Installation Brackets:	Die-Cast Aluminium 6° Multi-positional, locking hinges
Hardware:	Stainless Steel
Gasket:	Silicon
Surface Finish:	RAL 9005 Electrostatically polyester powder coat (standard) or Custom Any RAL (optional)

#### Measurements:

Weight:	1,8Kg (3,96lb)	1,8Kg (3,96lb)
Dimensions: (H x W x D)	173x149x115mm 7x5,8x4,5in	173x149x115mm 7x5,8x4,5in

#### Environmental

Storage Temperature:	-40°C - 85°C (-40°F - 185°F)
Start-up Temperature:	-25°C - 50°C (-13°F - 122°F)
Operating Temperature:	-40°C - 50°C (-40°F - 122°F)
Thermal Protection:	Automatic over temperature protection
Cooling:	Cooling by free air convection
Vibration Resistance:	Complies with ANSI C136.31-2010
Corrosion Resistance:	Complies with ASTM B117 standard
Ingress Protection Rating:	IP67
Impact Resistance Rating:	IK08
Humidity (max.):	0 to 98%, non-condensing

#### Certification

EU Safety:	EN 60598-1, EN 60598-2-5, EN 62471, EN 60529, EN 62262
EU EMC:	EN 55015, EN 61000-3-2, EN 61000-3-3, EN 61547, EN 61000-4-2, EN 61000-4-3, EN 61000-4-4, EN 61000-4-5, EN 61000-4-6, EN 61000-4-8, EN 61000-4-11
US Safety:	UL 1598
US EMC:	FCC Part 15 Class A
Warranty:	5-year Limited Warranty

# Procolor® DC Series

## Fixtures



- P03001101 Procolor®DC 10RGBW Floodlight Narrow Beam 10°
- P03001102 Procolor®DC 10RGBW Floodlight Medium Beam 25°
- P03001103 Procolor®DC 10RGBW Floodlight Wide Beam 35°



- P03001121 Procolor®DC 10DW Floodlight Narrow Beam 10°
- P03001122 Procolor®DC 10DW Floodlight Medium Beam 25°
- P03001123 Procolor®DC 10DW Floodlight Wide Beam 35°



- P03002101 Procolor®DC 60RGBW Floodlight Narrow Beam 10°
- P03002102 Procolor®DC 60RGBW Floodlight Medium Beam 25°
- P03002103 Procolor®DC 60RGBW Floodlight Wide Beam 35°



- P03002121 Procolor®DC 60DW Floodlight Narrow Beam 10°
- P03002122 Procolor®DC 60DW Floodlight Medium Beam 25°
- P03002123 Procolor®DC 60DW Floodlight Wide Beam 35°

# Procolor® DC Series

## Accessories, Cables, Power/Data Supplies

### Cables



- P20201-0.5 Push Lock Type 2+4 Pin 0.5M Extension Cable
- P20201-0.75 Push Lock Type 2+4 Pin 0.75M Extension Cable
- P20201-1 Push Lock Type 2+4 Pin 1M Extension Cable
- P20201-1.5 Push Lock Type 2+4 Pin 1.5M Extension Cable
- P20201-2 Push Lock Type 2+4 Pin 2M Extension Cable
- P20201-2.5 Push Lock Type 2+4 Pin 2.5M Extension Cable
- P20201-3 Push Lock Type 2+4 Pin 3M Extension Cable
- P20201-3.5 Push Lock Type 2+4 Pin 3.5M Extension Cable
- P20201-4 Push Lock Type 2+4 Pin 4M Extension Cable
- P20201-5 Push Lock Type 2+4 Pin 5M Extension Cable
- P20201-7.5 Push Lock Type 2+4 Pin 7.5M Extension Cable
- 20201-10 Push Lock Type 2+4 Pin 10M Extension Cable
- P20201-15 Push Lock Type 2+4 Pin 15M Extension Cable
- P20201-20 Push Lock Type 2+4 Pin 20M Extension Cable

### T Cables (Only For Procolor DC10)



- P08002 Power Pack 320 320W 2 Outputs Power Supply
- P08003 Power Pack 500 500W 2 Outputs Power Supply
- P08004 Power Pack 1000 1000W 8 Outputs Power Supply
- P08013 Power Pack 2000 2000W 8 Outputs Power Supply

### Power/Data Supplies



- P08002 Power Pack 320 320W 2 Outputs Power Supply
- P08003 Power Pack 500 500W 2 Outputs Power Supply
- P08004 Power Pack 1000 1000W 8 Outputs Power Supply
- P08013 Power Pack 2000 2000W 8 Outputs Power Supply

### Accessories



- P20203 Push Lock Type 2+4 Pin Female Plug Cap



---

Reference Name: Litore Resort Hotel  
Location: Antalya / Turkey  
Date: 2015

Litore Resort Hotel is a brilliant hotel where everything is planned exclusively for guests with a magnificent view of the Mediterranean. You start the day with a wonderful sunrise and end the day with a wonderful facade lighting by Hera Led. This project has become a rising star among all hospitality projects in Antalya.





Reference Name: Galeri Resort  
Location: Antalya / Turkey  
Date: 2013

You will feel yourself as if you are in a palace with our facade lighting application in this project. Balanced combination of colors and simple white, gives you soul both joy and peace. You will feel presence of nature colors while resting your soul. This festival of light illuminates all visitors' days. We made it sparkle you enjoy ...

**GALERİ RESORT**



---

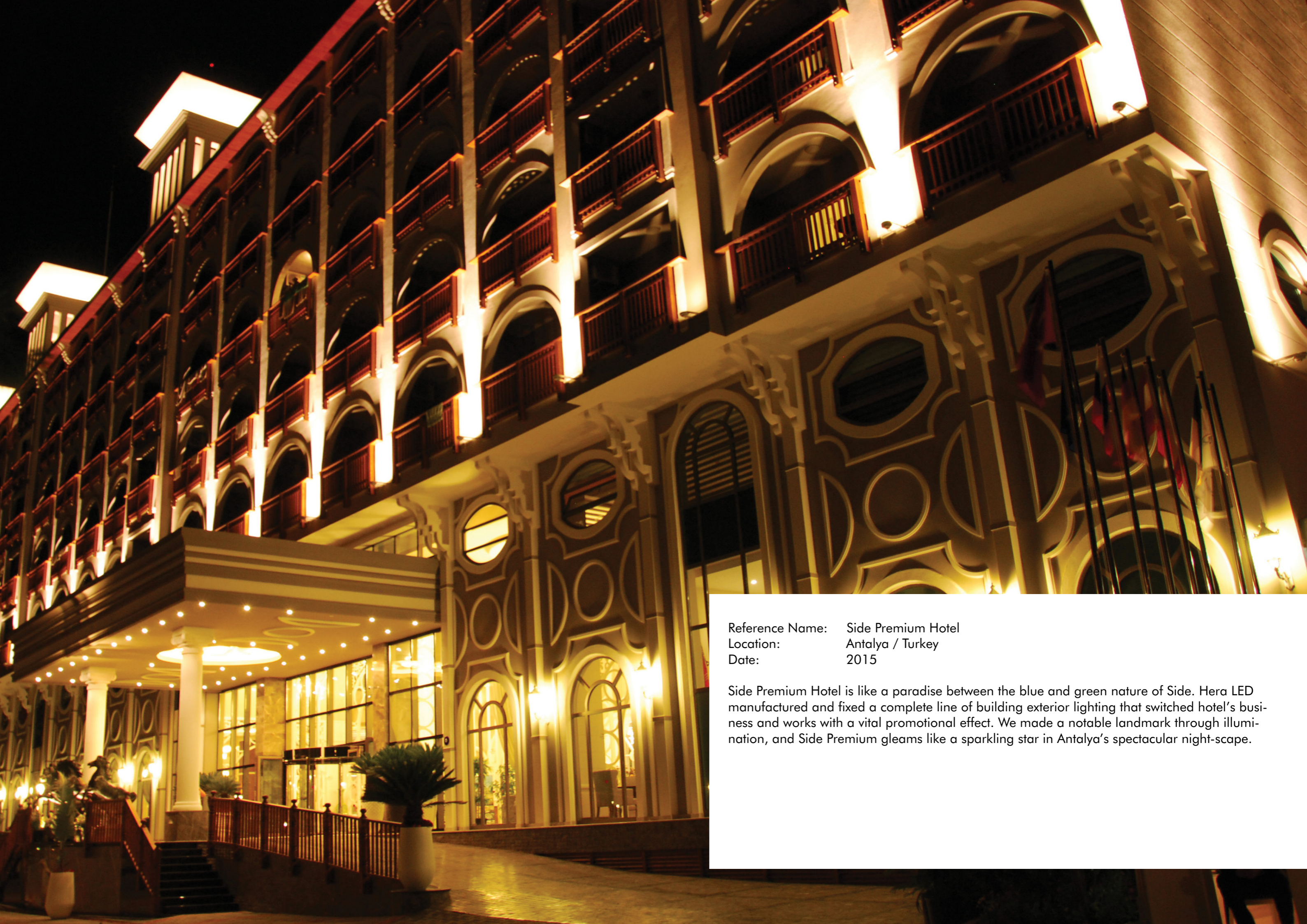
Reference Name: Sui OZ Hotel  
Location: Antalya / Turkey  
Date: 2015

---

Oz Hotel Sui is paradise of your dreams. It intersects the unique blue and green of Alanya. The hotel's architecture has been committed to colors of nature by Hera Led facade lighting and aimed to be eye-catching project while emphasizing naturalness. This hotel has attracted the attention of all local and foreign tourists and impresses all who saw the project.







Reference Name: Side Premium Hotel  
Location: Antalya / Turkey  
Date: 2015

Side Premium Hotel is like a paradise between the blue and green nature of Side. Hera LED manufactured and fixed a complete line of building exterior lighting that switched hotel's business and works with a vital promotional effect. We made a notable landmark through illumination, and Side Premium gleams like a sparkling star in Antalya's spectacular night-scape.





**HERA EĞLENCE VE MİMARİ AYDINLATMA SİSTEMLERİ A.Ş**

**Gullubaglar Mah. Kahramanlar Cad. No:3-1**

**34906 Pendik / Istanbul / Turkey**

**+90 216 307 79 00**

**+90 216 307 79 02**

**[www.heraled.com](http://www.heraled.com) [info@heraled.com](mailto:info@heraled.com)**